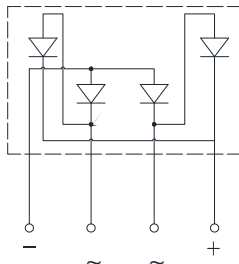
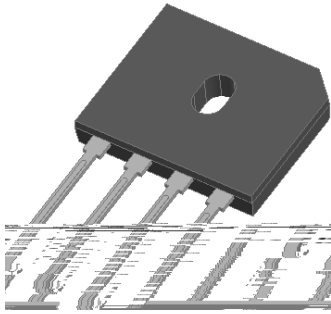


Super Fast Recovery Bridge Rectifiers



Features

- UL recognition, file #E230084
- Glass passivated chip junction
- Ideal for printed circuit boards
- High surge current capability
- Solder dip 275 °C max. 7 s, per JESD 22-B106

Typical Applications

General purpose use in AC/DC bridge full wave rectification for monitor, TV, printer, power supply, switching mode power supply, adapter, audio equipment, and home appliances applications.

Mechanical Data

Package: GBU

Molding compound meets UL 94 V-0 flammability rating, RoHS-compliant

Terminals: Tin plated leads, solderable per J-STD-002 and JESD22-B102

Polarity: As marked on body

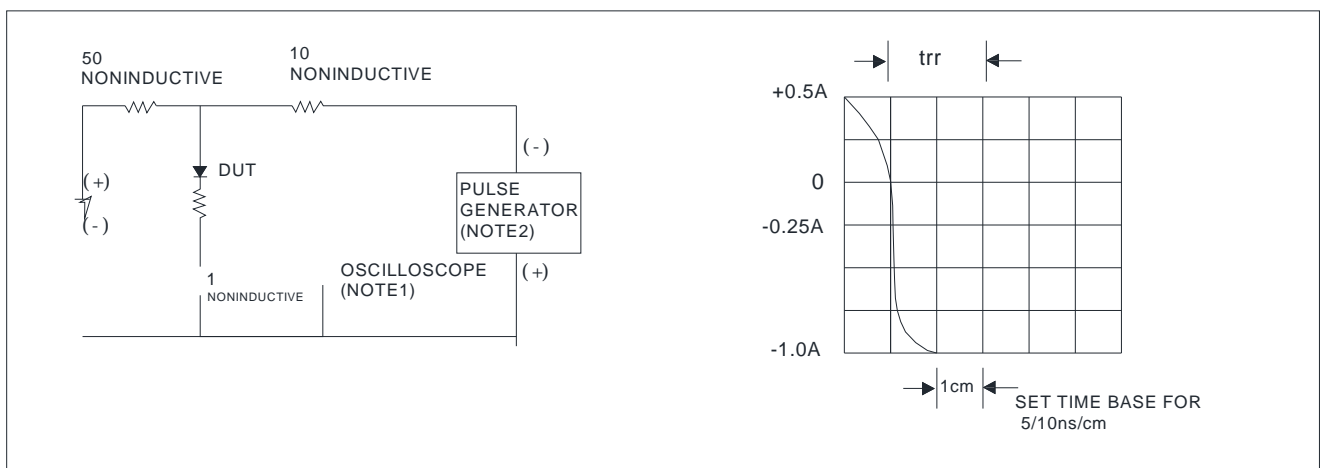
Maximum Ratings (T_a=25 Unless otherwise specified

PARAMETER		SYMBOL	UNIT	EGBU3006
Device marking code				EGBU3006
Maximum Repetitive Peak Reverse Voltage		V _{RRM}	V	600
Maximum RMS Voltage		V _{RMS}	V	420
Maximum DC blocking Voltage		V _{DC}	V	600
Average rectified output current @60Hz sine wave, R-load	With heatsink Tc =90	I _O	A	30
	Without heatsink Ta =25			3.0
Forward Surge Current (Non-repetitive) @60Hz Half-sine wave,1 cycle, Tj=25		I _{FSM}	A	320
Forward Surge Current (Non-repetitive) @1ms, square wave, 1 cycle, Tj=25				640
Current squared time @1ms t 8.3ms Tj=25 , Rating of per diode		I ² t	A ² S	425
Storage temperature		Tstg		-55 ~ +150
Junction temperature		Tj		-55 ~ +150
Dielectric strength @ Terminals to case, AC 1 minute		Vdis	KV	2.5
Mounting torque @Recommend torque 5kg cm		Tor	kg cm	8



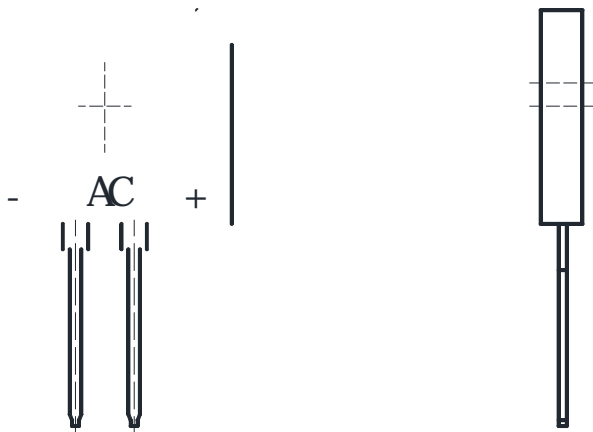
Electrical Characteristics T_a

FIG.5: Diagram of circuit and Testing wave form of reverse recovery time





Outline Dimensions



GBU		
Dim	Min	Max
A	21.80	22.30
B	18.30	18.80
C	17.50	18.00
D	3.30	3.90
E	7.10	7.50
F	5.50	5.90
G	1.91	2.54
H	2.06	2.54
I	1.02	1.27
J	4.83	5.33
K	3.30	3.56
L	2.40	2.66
M	0.46	0.56

Dimensions in millimeters



Disclaimer

The information presented in this document is for reference only. Yangzhou Yangjie Electronic Technology Co., Ltd. reserves the right to make changes without notice for the specification of the products displayed herein to improve reliability, function or design or otherwise.

The product listed herein is designed to be used with ordinary electronic equipment or devices, and not designed to be used with equipment or devices which require high level of reliability and the malfunction of which would directly endanger human life (such as medical instruments, transportation equipment, aerospace machinery, nuclear-reactor controllers, fuel controllers and other safety devices), Yangjie or anyone on its behalf, assumes no responsibility or liability for any damages resulting from such improper use of sale.

This publication supersedes & replaces all information previously supplied. For additional information, please visit our website [http:// www.21yangjie.com](http://www.21yangjie.com) , or consult your nearest Yangjie's sales office for further assistance.